



WLA Board Meeting

The October WLA Board Meeting was cancelled. The next board meeting will be November 14th at 6:30 pm at Lakelands Golf and Country Club.

Fall Water Quality Issues



Temperatures are heading downward, leaves are turning, and acorns and walnuts are raining down on the unsuspecting. Lots and lots of acorns and walnuts. This is the time of year to remind you that individual good practices can help maintain the quality of our lake.

Proper Fall Leaf Cleanup

The DNR strongly discourages dumping leaves and grass clippings into a lake, river, wetland, or other body of water. Leaves, grass clippings and similar debris add nutrients to the water that use up precious oxygen as they decompose.

You can do your part to help maintain our lake's water quality by not blowing your leaves into the lake. Enough go in naturally, don't add to the burden.

Fires and Burning

Likewise, fire ashes contain highly concentrated nutrients that can be absorbed by the soil and subsequently leach into the lake. Please don't burn leaves or other yard waste near the shoreline unless the ashes are contained and promptly disposed of away from the lake.

Hamburg Township's ordinance allows for outdoor burning, including leaves, in April, May, October and November. Burning hours are from sunrise to sunset, local time. All outdoor burning must be done at least 25 feet away from any occupy-able structure and 10 feet away from a property



line, roadway, lake, river or stream.

Good Lake Stewardship

MI Lakes & Streams Association has highlighted the recent discovery of two new invasive aquatic plants in Michigan. These are the [Hydrilla](#), considered one of the world's most invasive aquatic plants, and the [Glyceria maxima](#) (also known as rough mannagrass) an invasive plant similar to phragmites.

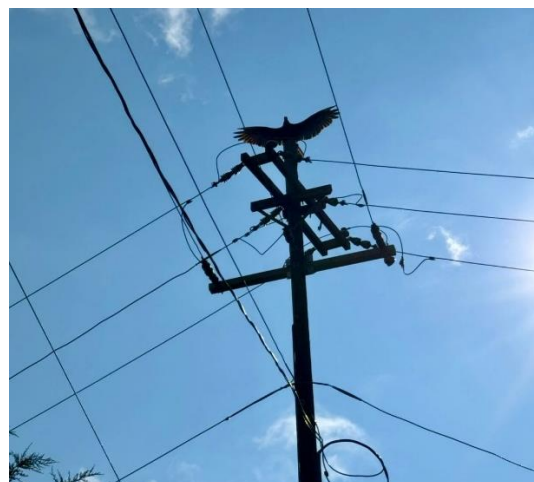


With this in mind, it's important to maintain vigilance when bringing boats, rafts, kayaks, paddle boards, etc. onto our lake from other bodies of water. Remember to **Clean, Drain and Dry**.

- CLEAN equipment thoroughly between trips to keep from transporting undesirable plant fragments, seeds or organisms from one site to another.
- DRAIN all water from boats and equipment.
- DRY boats, gear and equipment for 5 days (if possible) before transporting to another waterbody.

Lake Life

August Memories





September Memories





Music on Winans





Please welcome our newest neighbors Kiley and Ron Culpepper. They have moved into 5966 Winans Drive with their son Boedy. They also have four dogs: Theo, Stella, Banner and Pita.

New Neighbors

Mary Evergreen does a great job welcoming new neighbors but could use YOUR help. Please send her an email if you see movement on houses next/close to you. Her email is mlevergreen at charter dot net.

Newsletter

Please send any articles or pictures you'd like included in the newsletter to Terre Voegeli (voegelit@gmail.com).

WLA Board Members

Greg Dygert, President
Michael Wheeler, Vice-President
Simon Ren, Secretary
Trish Ibrahim, Treasurer

Dr. Marty Harris, Governor
Billy Kutsomarkos, Governor
Evan Yates, At-Large

For contact info, please go to the [LGCC MEMBER DIRECTORY](#) or contact winanslakesecretary@gmail.com.

You are receiving the Winans Lake Association newsletter because you are a current Winans Lake Association member on the Lakelands country club membership list **OR** because you have asked to receive the newsletter in past years. You can email me directly (voegelit@gmail.com) to add additional household email addresses, change existing email addresses or be removed. You can also use the Mailchimp unsubscribe option on the electronic newsletter to change your email address or be removed from the mailing list.